



# MONTHLY MEMBERSHIP PROGRESS REPORT

District 118 K

Results as of: 06/30/2018

GMT: JOOST PAIJMANS

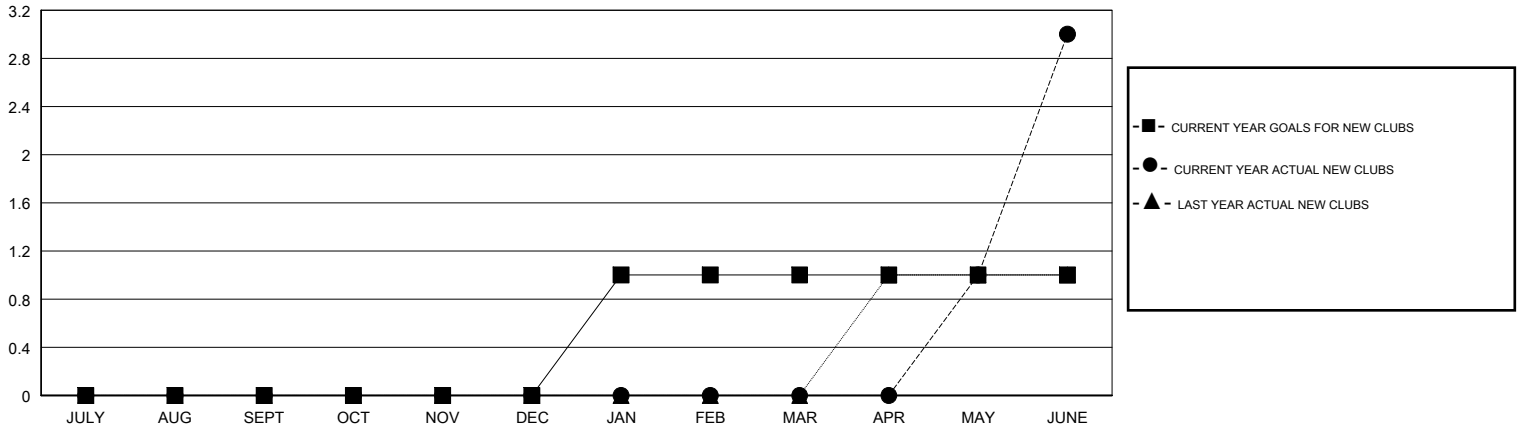
LOCATION TURKEY

GMT CA

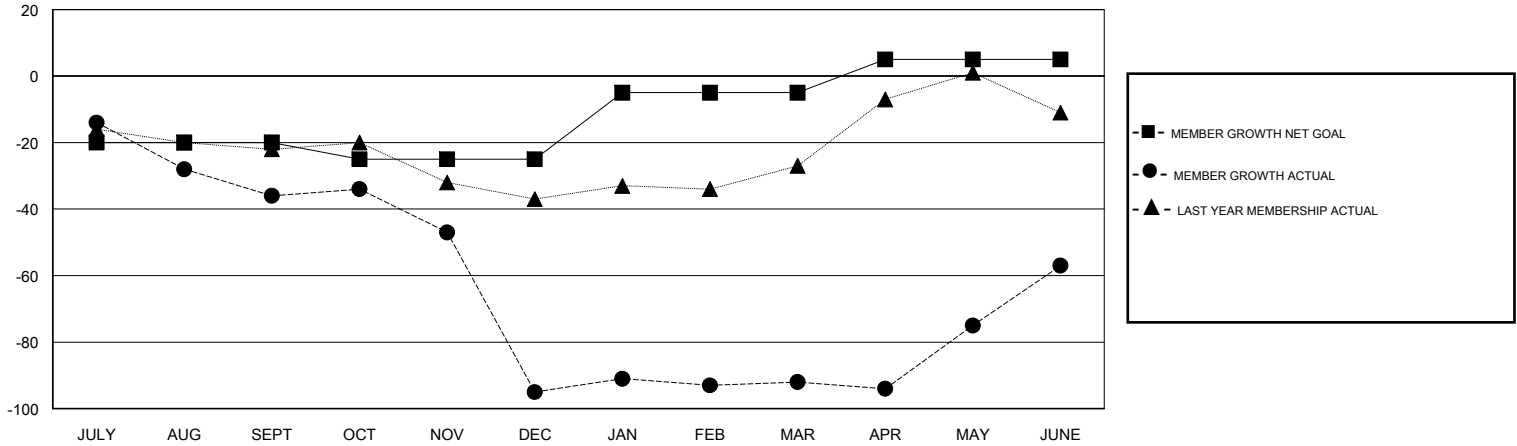
Clubs			
RESULTS FOR 2017-2018			
QUARTER	NEW CLUB GOAL	NEW CLUBS	DROPPED CLUBS
JULY/AUG/SEPT	0	0	1
OCT/NOV/DEC	0	0	6
JAN/FEB/MAR	1	0	0
APR/MAY/JUNE	0	3	1

Members			
RESULTS FOR 2017-2018			
QUARTER	MEMBER GROWTH NET GOAL	MEMBER GROWTH ACTUAL	DROPPED MEMBERS ACTUAL (including transfers)
JULY/AUG/SEPT	-20	2	38
OCT/NOV/DEC	-5	10	68
JAN/FEB/MAR	20	28	11
APR/MAY/JUNE	10	103	67

GOALS AND ACTUAL NEW CLUBS CUMULATIVE



GOALS AND ACTUAL MEMBERS CUMULATIVE



DROPPED CLUBS: 8	23 CLUBS OF 39 ADDED 1 OR MORE NEW MEMBERS	<u>GENDER DISTRIBUTION</u> MALE 446 (56.31%) FEMALE 346 (43.69%) Women Percentage Fiscal Year Goal: 51%
<u>DROPPED MEMBERS</u> DECEASED 1 CLUB CANCELLED 57 OTHER 126 TOTAL 184	<a href="#">CLICK HERE FOR CUMULATIVE MEMBERSHIP DATA</a>	TOTAL FAMILY UNIT MEMBERS 0 FAMILY MEMBERS PAYING HALF DUES 0